

# Birdhouse Style – Thinking Outside the Box

The Bucks County Chapter of the American Institute of Architects



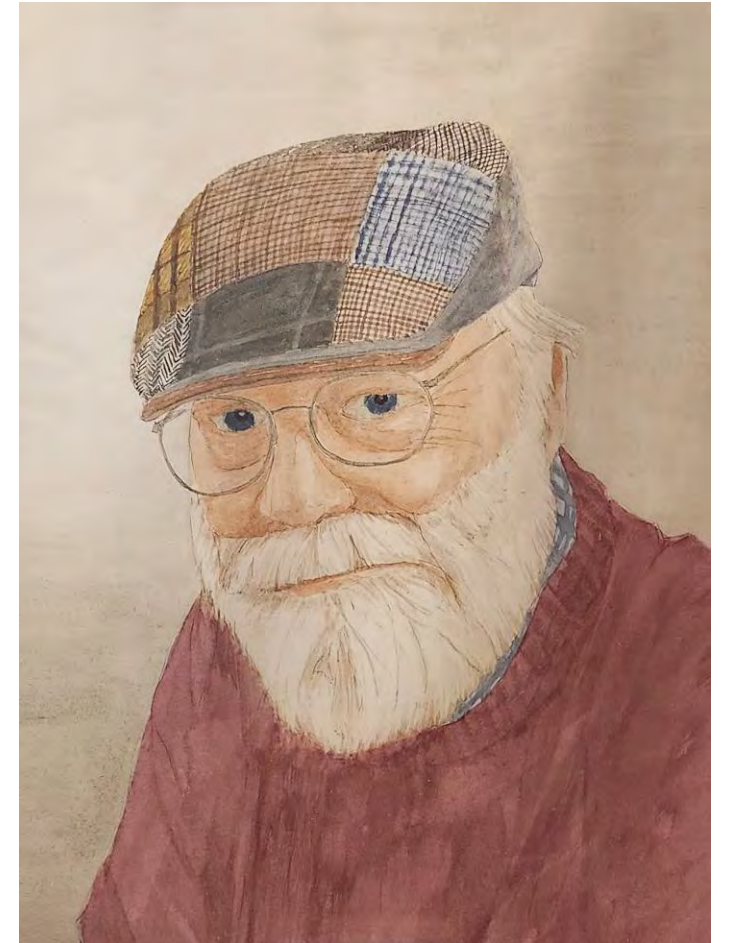
# Bucks County Chapter of the American Institute of Architects

- Eleven architects living in Bucks County split off from Philadelphia Chapter of AIA and incorporated their own local chapter of the AIA on February 1, 1961. National AIA had previously subdivided other chapters to form new local organizations. The formation of the Bucks County Chapter marked the first chapter to form from a grassroots effort. The AIA Bucks County Chapter currently has about 90 members and is an active community member.
- The American Institute of Architects is the voice of the architectural profession in the US and the resource for its members in service to society. Through a culture of innovation, AIA empowers its members and inspires the creation of a better built environment.



# George J. Donovan Memorial Scholarship

- AIA Bucks County's George J. Donovan Memorial Scholarship assists Bucks County high school graduates (graduating seniors) interested in furthering their education in architecture and related fields.
- The scholarship was created in memory of George J. Donovan, AIA who was instrumental in shaping the architecture of Bucks County during his career of over 50 years until his passing in 2018.
- In his retirement, Mr. Donovan was a prolific watercolor artist who displayed his work in the former Upstairs Gallery at Peddler's Village. Over the years, Mr. Donovan and the firm that is part of his legacy, Phillips & Donovan Architects, LLC, have been instrumental in the planning and design of many of the buildings in Peddler's Village.



# Best of the Nest Competition

Categories:

- Traditional
- Whimsical
- Bucks County Landmark
- Natural Habitat
- Professional
- Student (12-17)
- Kids Only (11 & Under)



Prizes range from \$300 – \$50, see <https://peddlersvillage.com/birdhouse-entry-form/> for details.

# Best of the Nest Competition Rules

## Entry Forms

- There is no fee to enter. The deadline for completed entry forms is April 16, 2025. A single entry may not be entered in more than one category.

## Entry Drop Off

- Completed entries must be dropped off on **Sunday, April 19, 2025** between 11:00 a.m. – 3:00 p.m. upstairs at Cock ‘n Bull Restaurant.

## Entry Display

- Entries will be displayed outdoors at Peddler’s Village from April 8 - June 8, 2025. Peddler’s Village reserves the right to remove any entry which begins to look in disrepair.

## Judging

- Judging will take place from April 20-23 to determine 1st, 2nd, 3rd, and honorable mention prizes. Entries will be judged on the following criteria:
  - Overall appearance/composition of the design
  - Originality/use of materials
  - Craftsmanship
  - “Fit” in the category
  - Level of difficulty in the design and execution
  - Suitability for bird type (Natural habitat category only)

## Winners

- Ribbons will be placed on winning entries. The winners will be posted on the Peddler’s Village website. The winner’s list will not be available by phone. Prizes will be available for pick-up on June 9, 2025.

## Entry Pick Up

- All entries not donated to the auction to benefit either Bucks County Audubon Society at Honey Hollow or the AIA Bucks County’s George J. Donovan Memorial Scholarship must be picked up on Monday, June 9, 2025, between 10 a.m. – 5 p.m. Any entries not picked up by this time will become the property of Peddler’s Village.

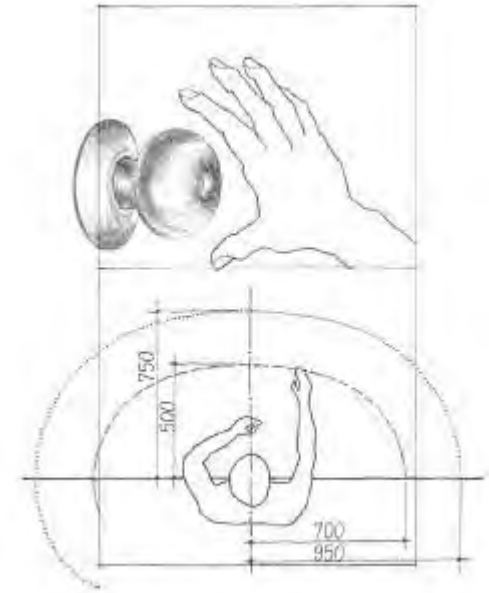
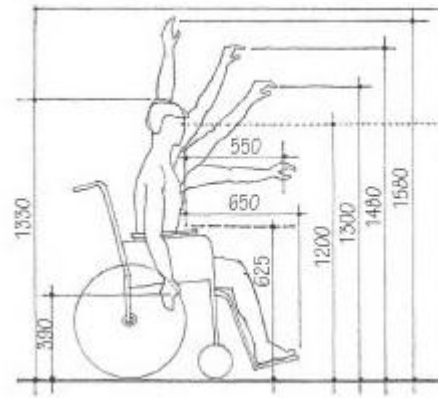
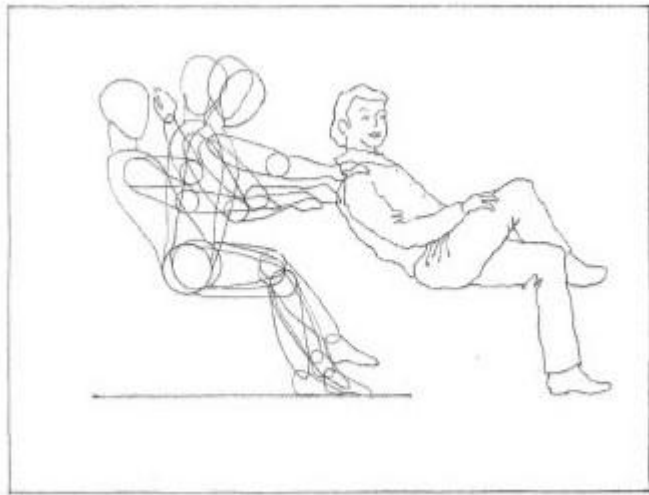
# Best of the Nest Competition Rules

## Entry Specifics

- **Mounting Options:**
  - Option 1: Hung from above using an eye hook. Make sure it is in the center of your birdhouse to distribute and balance the weight properly. After drop off, your bird house will be hung by its eye hook from a shepherd hook and pole.
  - Option 2: Mounted on a sturdy display board ( $\frac{1}{2}$ " or  $\frac{3}{4}$ " plywood recommended) using foundation anchors. The display board should be an integral part of the design and be size-appropriate for the birdhouse. After drop off, your birdhouse will be attached to a support pole.
- All entries must be **under 12 pounds** in weight and must be portable.
- **Size limitations:** All entries must fit into an area no bigger than **20" x 20" x 20"** and no smaller than **4" x 4" x 4."**
- All entries must have an **entry hole** and an **interior space** for a bird to nest.
- To protect birds and avert potential disruption when the display is completed, all entries should include a mesh piece that can be placed over the hole(s) so that birds will not inhabit the house during the temporary display.
- **All birdhouse entries must be constructed using durable, weather-resistant materials capable of withstanding outdoor conditions. Participants are encouraged to use waterproof glue, nails, screws, and other sturdy construction methods to ensure the birdhouses remain intact despite exposure to the elements.**
- Please securely attach a 3" x 5" index card on the bottom of your birdhouse with your name, address, email, phone number, the category you have entered, and whether you would like to donate your birdhouse to benefit one of the two named local nonprofits (and if so, which one). For the Natural Habitat category, please indicate the type of bird. For the Bucks County Landmark category, please include a picture of the real landmark.
- Please do not include lighting, movement, or other electronic or battery-operated components in the construction or decoration of the entry.
- Peddler's Village is not responsible for any birdhouses on display.
- Best of the Nest is a family-friendly display. Peddler's Village reserves the right not to display an entry that is deemed offensive, controversial, inappropriate, religious, political, or poorly constructed and may remove entries based on guest complaints or damage.

# Basic Design Elements & Principles

# Human Scale



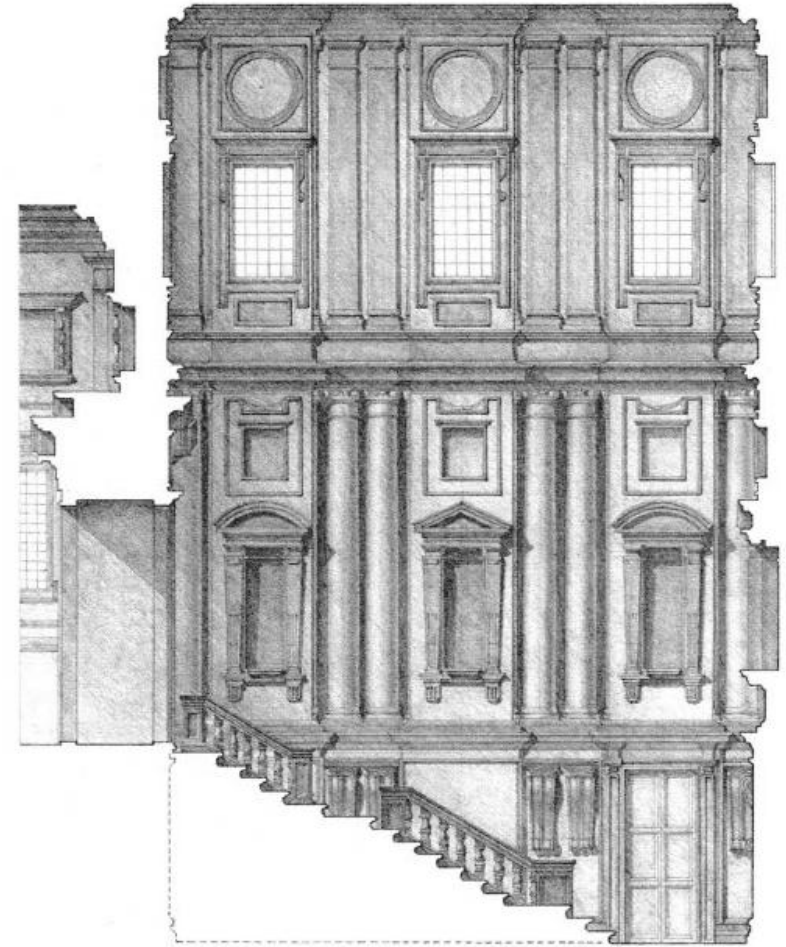


# Repetition & Rhythm



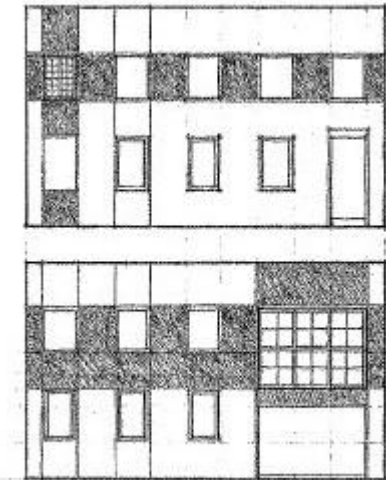
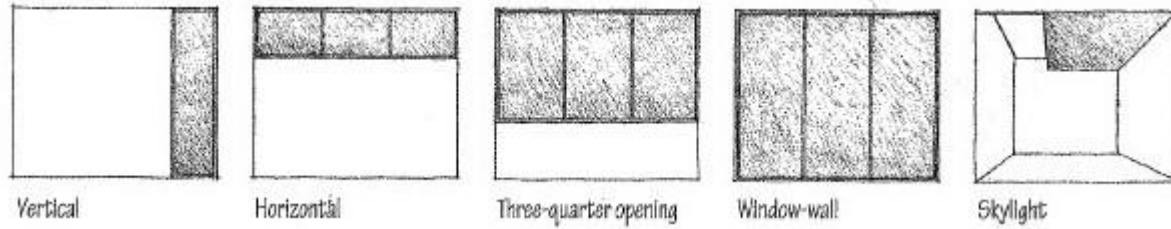
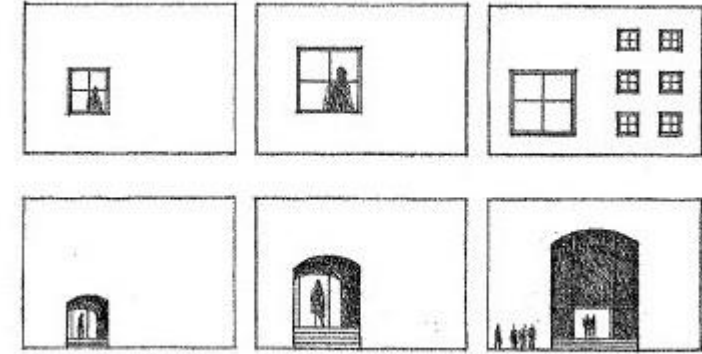
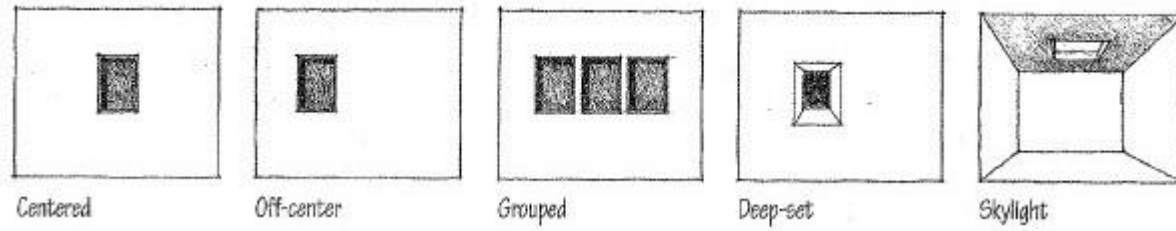
**Victorian Facades** fronting a San Francisco street  
Francis D. K. Ching

Multiple rhythms can be laid over one another in the facade of a building.

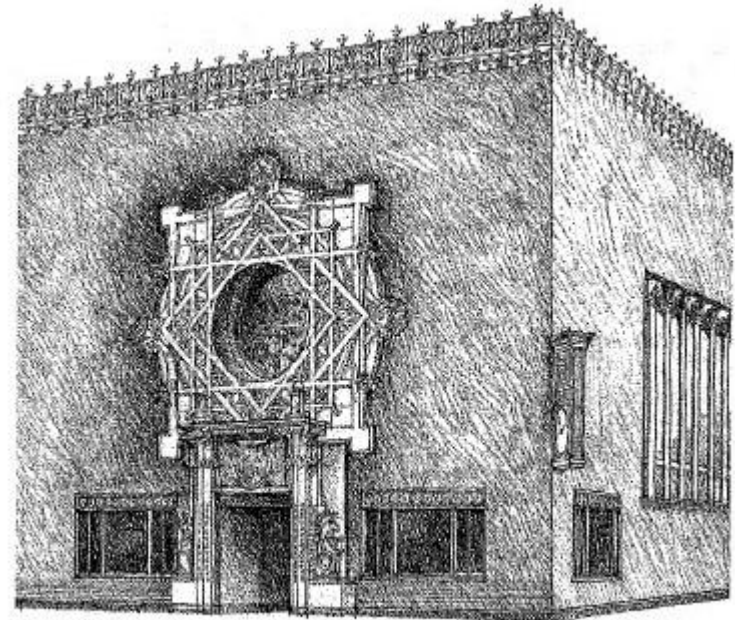
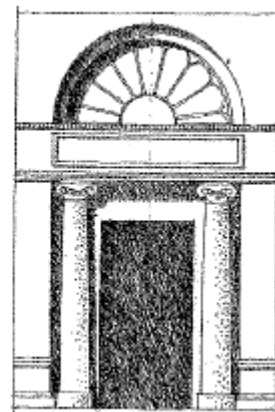
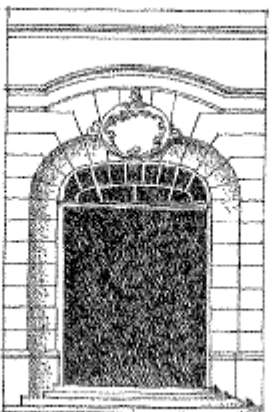


James Cooper, Ph.D.

# Openings



# Entrance



Merchants' National Bank, Grinnell, Iowa, 1914, Louis Sullivan



# Entrance



# Explore & Experiment with Materials







Inspiration From Architecture





































Archer & Buchanan



















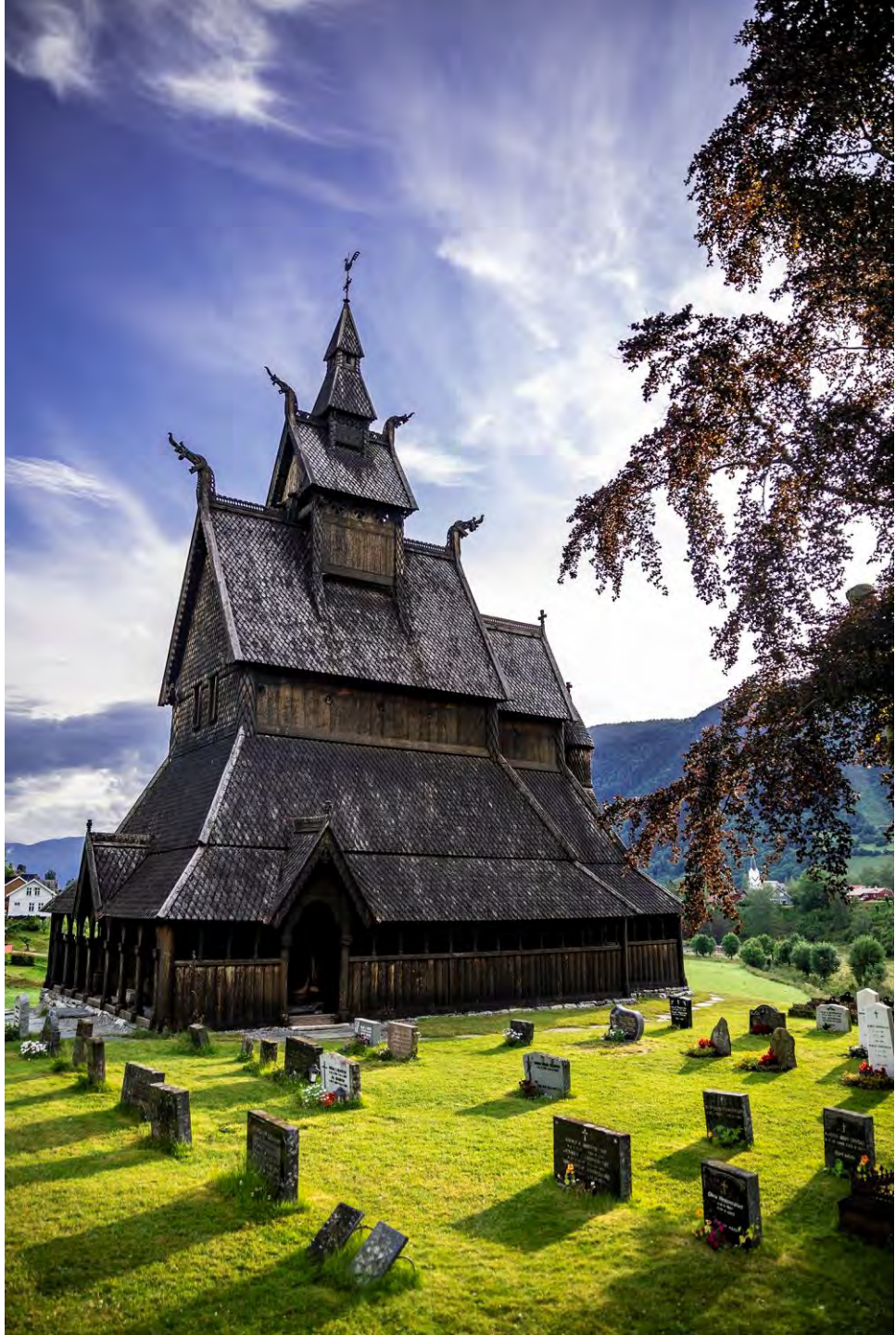


































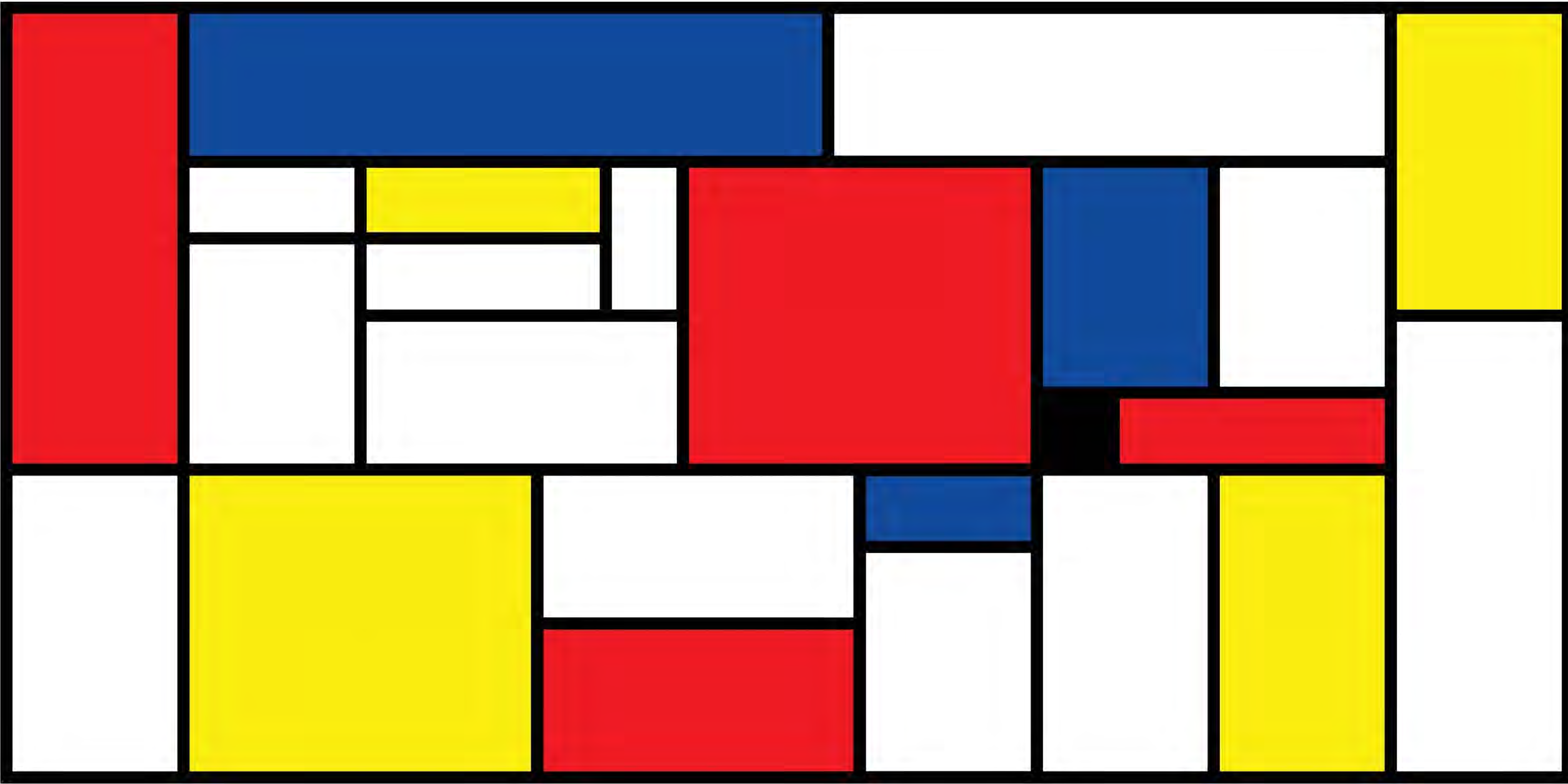




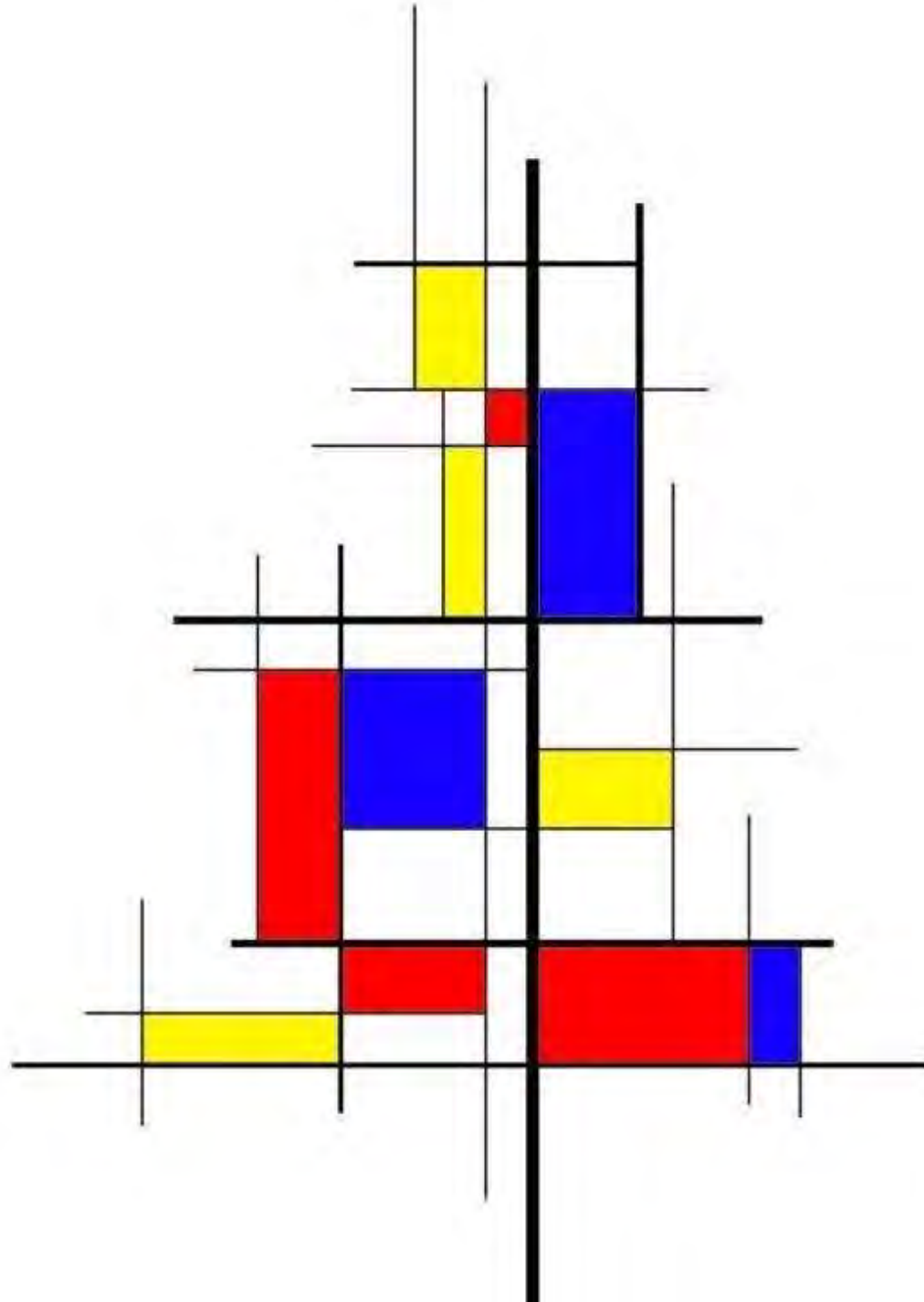




Inspiration From Art



Piet Mondrian















Chris Becker, Artist



Chris Becker, Artist

Previous Entries





































Best of the Nest  
Residence Competition & Display

CATEGORY: WHIMSICAL VOTES: 96

"Birdies Welcome"

ENTER  
@bestofthenest  
#bestofthenest

Vote by  
scanning QR  
code Page 5







Best of the Nest  
Birdhouse Competition & Display

CATEGORY	KIDS ONLY! (Ages 11 and under)	VOTE #
		98

"The Lego Bird-Cave"



Questions?

